



Client Services Help Guide

Login Problems



397 Eagleview Boulevard
Exton, Pennsylvania 19341

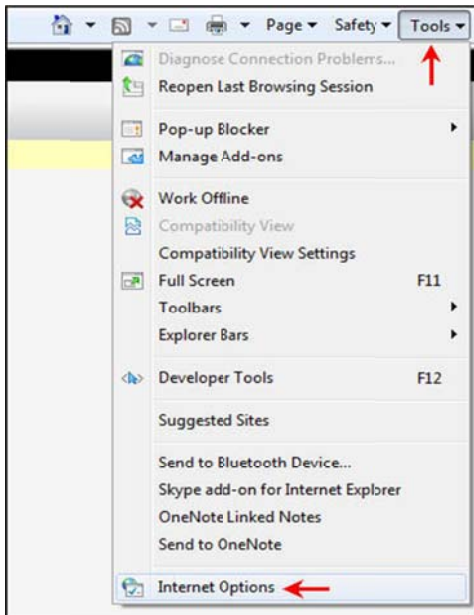
Need a Reminder About Your Login Info?

1. ID – usually this is your phone number with area code. Use only numbers!
2. PIN – this is a 4 or 5 digit number

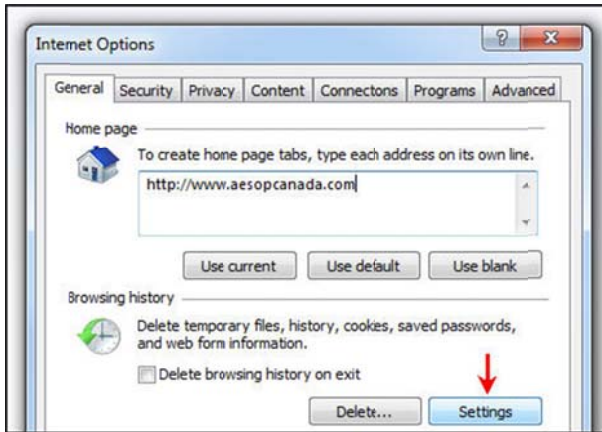
Still Having Trouble

Check your browser (instructions are for Internet Explorers using a PC)

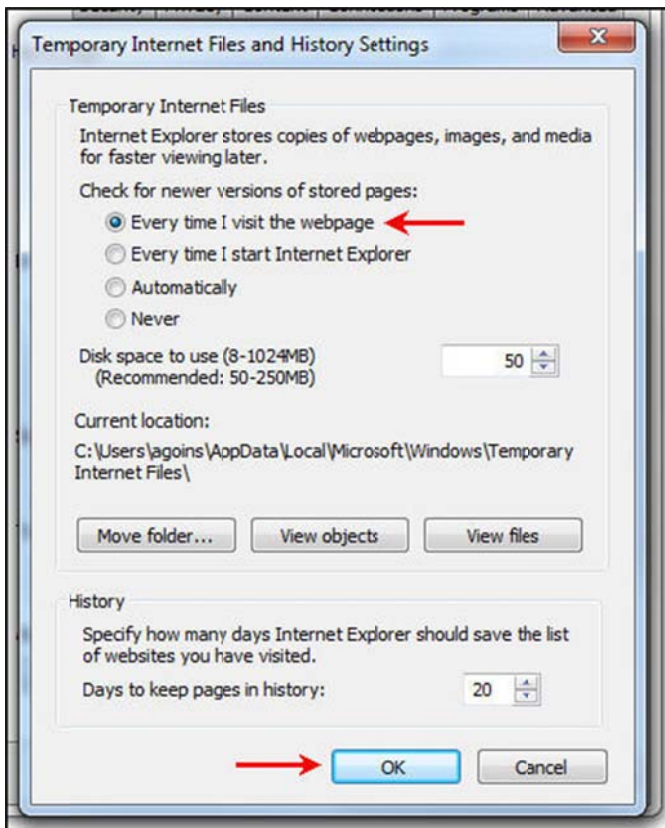
1. Make sure you type www.aesopcanada.com into the address bar (not a bookmark). If you are using a web search make sure to search for “Aesop Canada”
2. In your web browser go to “Tools” and then “Internet Options”



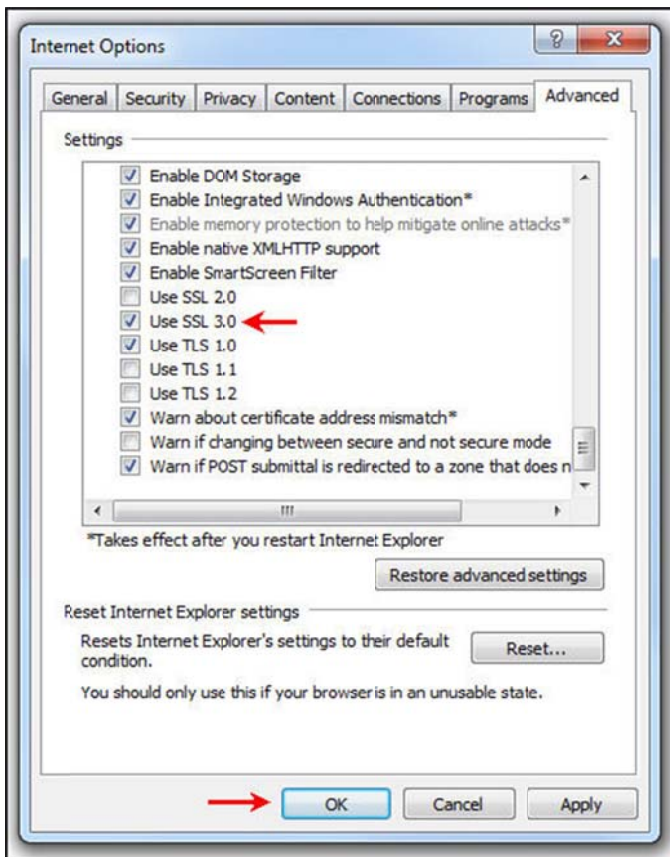
3. Choose the "General" tab and then under "Browsing History" click the "Settings" button



4. Click the option "Every time I visit the webpage" and then "ok"



5. Click the "Advanced" tab and make sure that "Use SSL 3.0" is checked



6. Check your "Privacy" setting and make sure it is at medium. Click "ok" and then "ok" again

7. Close your browser and reopen your browser and try to login



Still Can't Login?

If you are still having difficulties logging in, please contact your district's Aesop Administrator for help.

If you are an Aesop user in the United States, please go to www.aesopeducation.com to login.